

Kyoto Garden

FABRICS BY LORI MASON



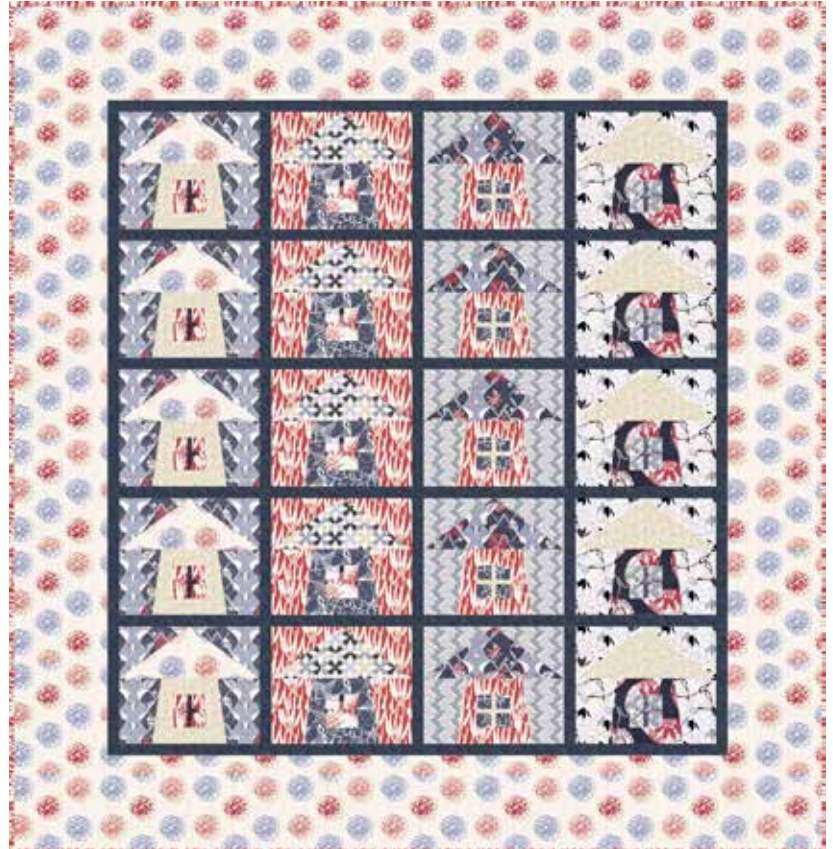
About Kyoto Garden

Kyoto Garden Collection began with the Koi print. While in Hawaii, I was inspired by the beauty of a Koi pond. Then I remembered a book filled with images of intricately folded white paper lantern forms. My next print was inspired by one of those lanterns. Then I thought of those beautiful red-orange pods called Chinese Lanterns. Peonies and other organic shapes followed after that. It was important to have an air of elegant contemplation that I associate with a Japanese esthetic. — *Lori Mason*

Quilt Design: **Lori Mason**

Quilt Size: **86¼" x 90"**

andoverfabrics.com



andover



makower uk
The Henley Studio

Free Pattern Download Available

1384 Broadway New York, NY 10018
Tel. (800) 223-5678 • andoverfabrics.com

Kyoto Garden



Introducing Andover Fabrics new collection: **Kyoto Garden** by Lori Mason

Quilt designed by Lori Mason

Step into this tranquil garden filled with koi fish, charming pagodas, and exotic flowers. The patchwork is made with template patches that are easy to put together. One colorway is all reds and neutral grays; the other is browns, orchids, and golds. Either quilt will bring a note of exotic, Eastern beauty to wherever it is displayed.

Quilt finishes 86¼" x 90"
20 Blocks: 15" x 12½"

Charcoal Fabric Requirements

| | | Yardage | Fabric |
|------------------|-----------------|----------|---------|
| Fabric A | blocks | ½ yard | 6033-C |
| Fabric B | border, blocks | 3 yards | 6034-C |
| Fabric C | blocks | 1 yard | 6035-C |
| Fabric D | blocks, binding | 1¾ yards | 6036-CR |
| Fabric E | blocks | ½ yard | 6037-C |
| *Fabric F | blocks | ¾ yard | 6037-CL |
| Fabric G | blocks | ¾ yard | 6038-C |
| Fabric H | blocks | ¾ yard | 6039-CN |
| Fabric I | border, sashes | 1½ yards | 1867-C1 |
| Fabric J | blocks | ½ yard | 6040-C |
| *Backing | | 8 yards | 6037-CL |

Brown Fabric Requirements

| | | Yardage | Fabric |
|------------------|-----------------|----------|---------|
| Fabric A | blocks | ¾ yard | 6033-N |
| Fabric B | blocks, binding | 1¾ yards | 6034-N |
| Fabric C | blocks | ½ yard | 6035-N |
| Fabric D | blocks | 1 yard | 6036-NP |
| *Fabric E | border, blocks | 3½ yards | 6037-NL |
| Fabric F | blocks | ½ yard | 6038-NG |
| Fabric G | blocks | ½ yard | 6039-N |
| Fabric H | blocks | ½ yard | 6040-N |
| Fabric I | border, sashes | 1½ yards | 5468-N1 |
| *Backing | | 8 yards | 6037-NL |

Cutting Directions

Note: Read assembly directions before cutting patches.

Fussy-cut all patches made with directional prints. All measurements are cut sizes and include ¼" seam allowances. Borders and sashes are cut the exact lengths required plus ¼" seam allowances. WOF designates the width of fabric from selvedge to selvedge (approximately 42" wide).

For ONE block, cut the following:

Pagoda: Cut (1) Template 4, (1) Template 4 reversed, (1) Template 5, (1) Template 6

Roof: Cut (1) Template 1

Windows: Cut (4) squares 2" x 2"

Window sash: Cut (1) rectangle 1" x 4", (2) rectangles 1" x 2"

Background: Cut (1) Template 2, (1) Template 2 reversed, (1) Template 3, (1) Template 3 reversed

Charcoal Quilt Cutting

Fabric A Cut (5) pagodas
Cut (10) window sashes, (10) rectangles 1" x 4",
(20) rectangles 1" x 2"

Fabric B Cut (2) top/bottom borders 10½" x 86¾", cut lengthwise
Cut (2) side borders 10½" x 70½", cut lengthwise
Cut (5) roofs
Cut (5) windows (20 squares)

Fabric C Cut (5) roofs
Cut (5) backgrounds

Fabric D Cut (10) strips 2½" x WOF for binding
Cut (5) backgrounds
Cut (5) pagodas
Cut (5) windows

Fabric E Cut (5) pagodas
Cut (5) windows
Cut (5) window sashes

Fabric F Cut (5) backgrounds

Fabric G Cut (5) backgrounds
Cut (5) windows

Fabric H Cut (5) roofs
Cut (5) pagodas
Cut (5) window sashes

Fabric I Cut (20) strips 1¾" x WOF, pieced to make the following:
(5) long sashes 1¾" x 68"
(2) t/b borders 1¾" x 66¾"
(16) short sashes 1¾" x 15½"

Fabric J Cut (5) roofs

Backing Cut (3) panels 33" x 95", pieced to fit quilt top with overlap on all sides

Kyoto Garden Quilt

Brown Quilt Cutting

Fabric A Cut (5) pagodas
Cut (5) roofs

Fabric B Cut (10) strips $2\frac{1}{2}$ " x WOF for binding
Cut (5) backgrounds
Cut (5) roofs
Cut (5) windows (20 squares)

Fabric C Cut (5) backgrounds

Fabric D Cut (5) pagodas
Cut (5) backgrounds
Cut (5) window sashes

Fabric E Cut (2) top/bottom borders $10\frac{1}{2}$ " x $86\frac{3}{4}$ ", cut lengthwise
Cut (2) side borders $10\frac{1}{2}$ " x $70\frac{1}{2}$ ", cut lengthwise
Cut (5) roofs
Cut (5) backgrounds
Cut (5) window sashes

Fabric F Cut (5) pagodas
Cut (10) windows (40 squares)

Fabric G Cut (5) pagodas
Cut (5) windows
Cut (5) window sashes

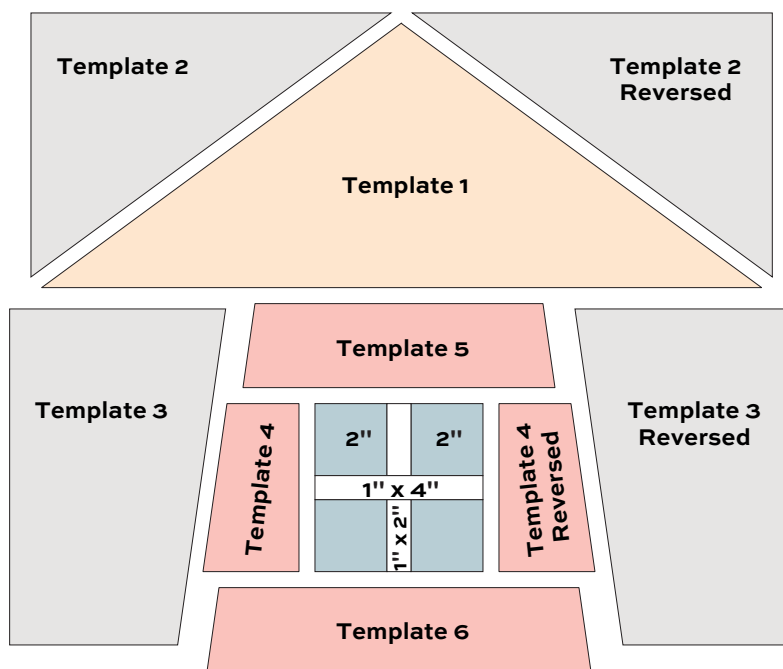
Fabric H Cut (5) roofs
Cut (5) window sashes

Fabric I Cut (20) strips $1\frac{3}{4}$ " x WOF,
pieced to make the following:
(5) long sashes $1\frac{3}{4}$ " x 68"
(2) t/b borders $1\frac{3}{4}$ " x $66\frac{3}{4}$ "
(16) short sashes $1\frac{3}{4}$ " x $15\frac{1}{2}$ "

Backing Cut (3) panels 33" x 95", pieced to
fit quilt top with overlap on all sides

Making and Assembling the Quilt

1. Refer to the quilt photograph for color placement. Feel free to cut more or fewer patches of each fabric as you wish to make your pagodas unique. If you want the quilt to have the same look as the one shown, be sure to make blocks in sets of 5 alike. To ensure that odd-shaped patches go together correctly, lightly mark the sewing line on the back of all template patches.
2. Referring to the Pagoda Block diagram, sew a 1" x 2" window sash between 2 window squares. Repeat. Sew the 1" x 4" window sash between the 2 pieced window units. Sew a Template 4 patch and 4 reversed patch to the window unit. Sew a Template 5 patch to the top and a Template 6 patch to the bottom.
3. Sew Template 3 and Template 3 reversed background patches to sides of the pagoda. Sew the roof to the top, and add the background Template 2 and 2 reversed patches to finish the block. It should measure 13" tall and $15\frac{1}{2}$ " wide, raw edge to raw edge.
4. Referring to the Quilt Diagram, sew 5 blocks from one set with 4 Fabric I short sashes to make a vertical row. Make 4 rows. Sew the 4 block rows with 5 Fabric I long sashes. Sew the Fabric I borders to the top and bottom of the quilt.
5. Sew shorter $10\frac{1}{2}$ "-wide borders to the sides. Sew longer borders to the top and bottom.

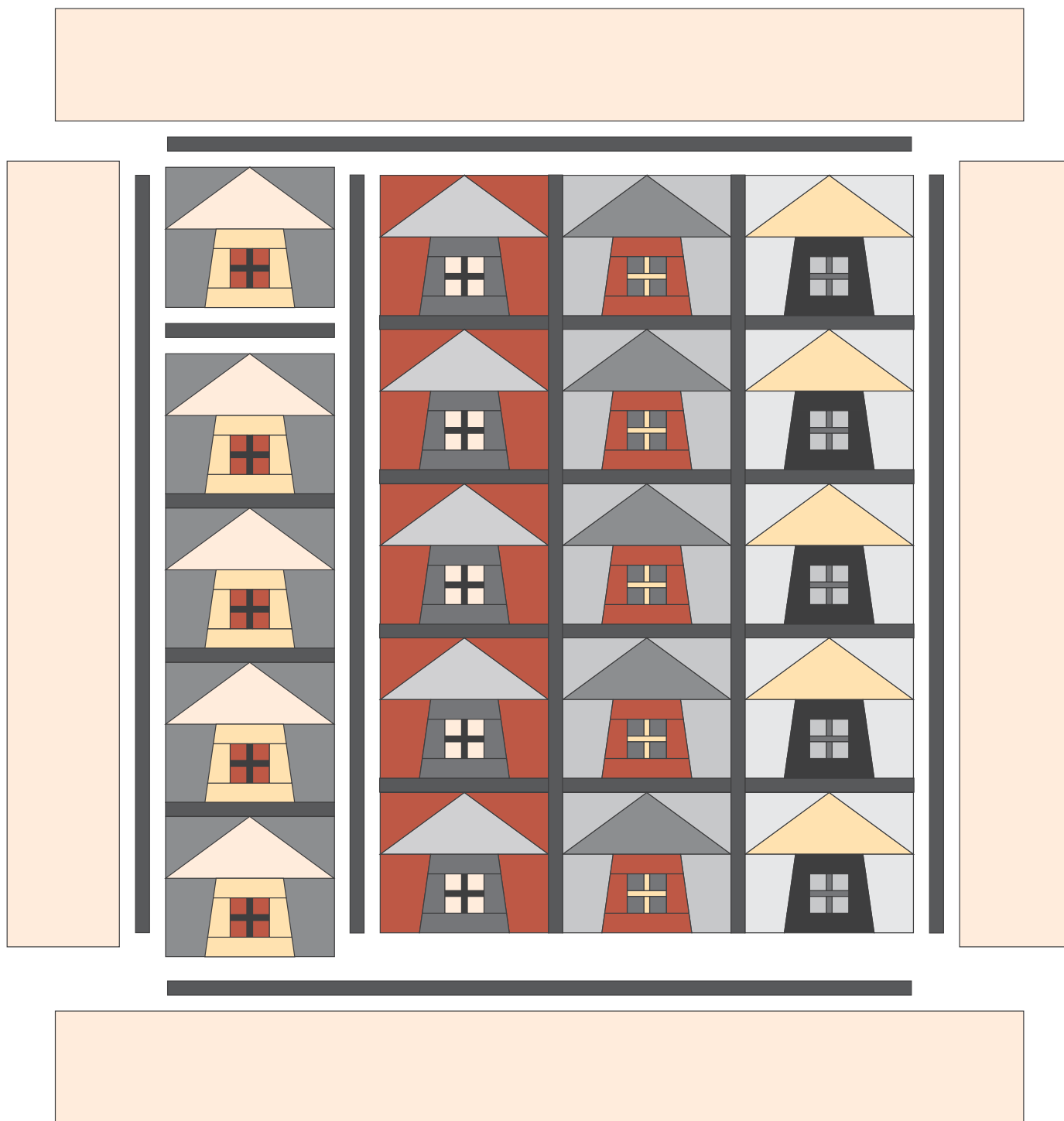


Pagoda Block – Make 20

Kyoto Garden Quilt

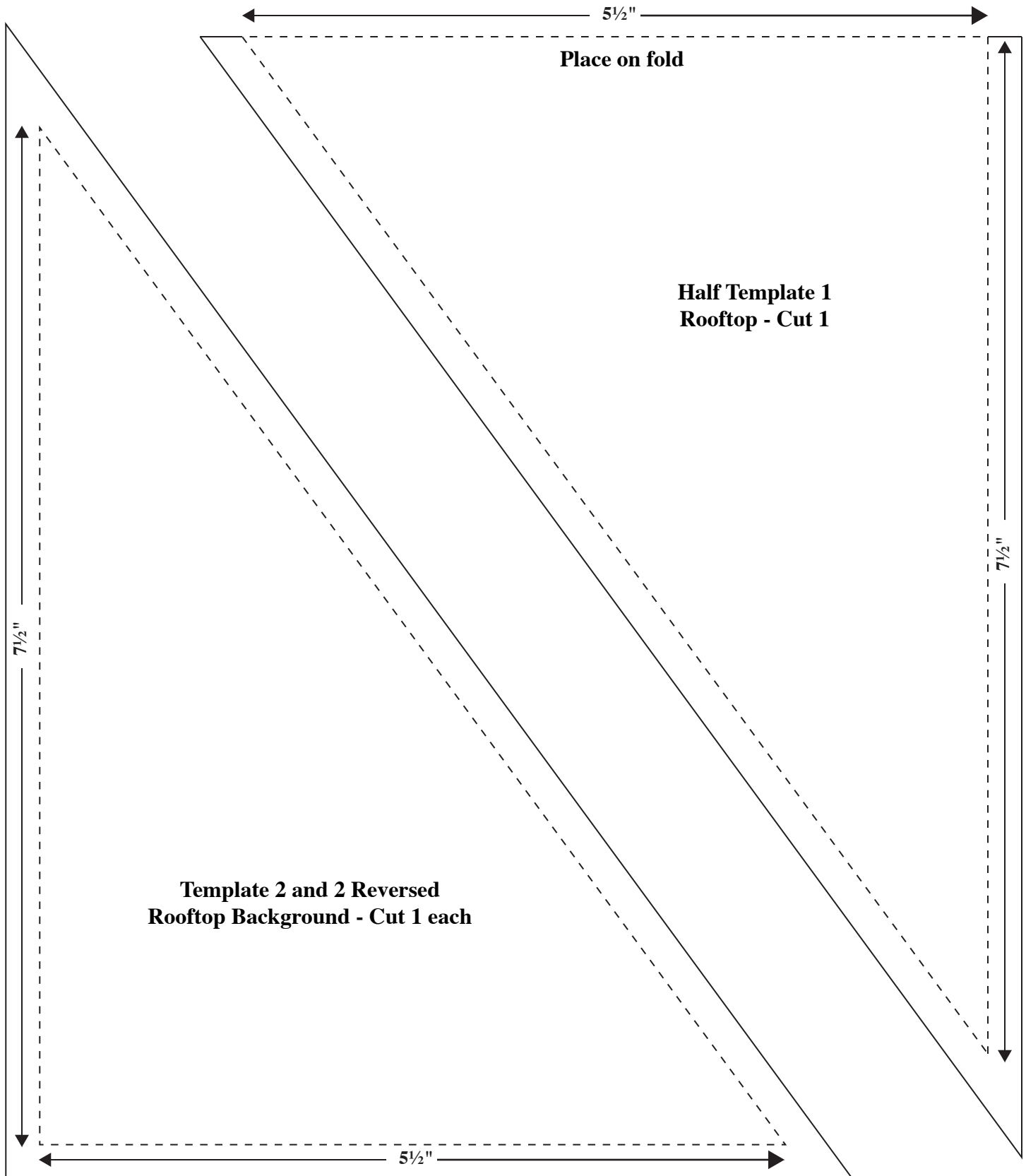
Finishing the Quilt

6. Layer the quilt with batting and backing and baste. Quilt in the ditch around borders and block patches. Quilt around the printed motifs in the blocks and outer border. Bind to finish the quilt.

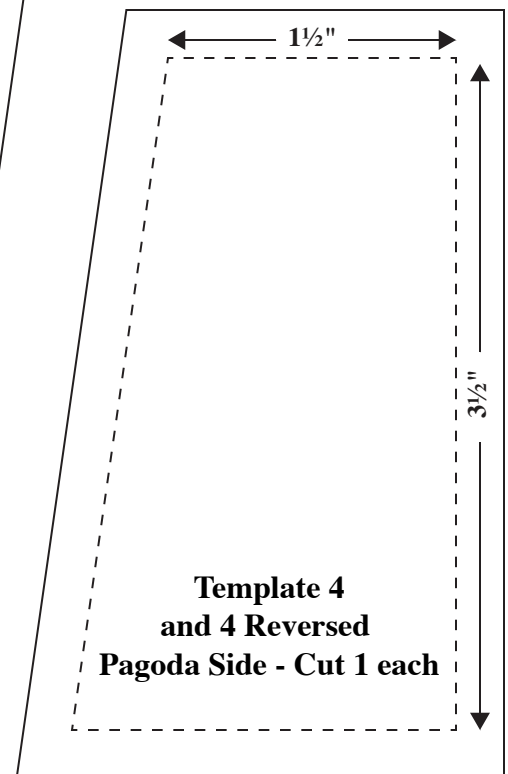
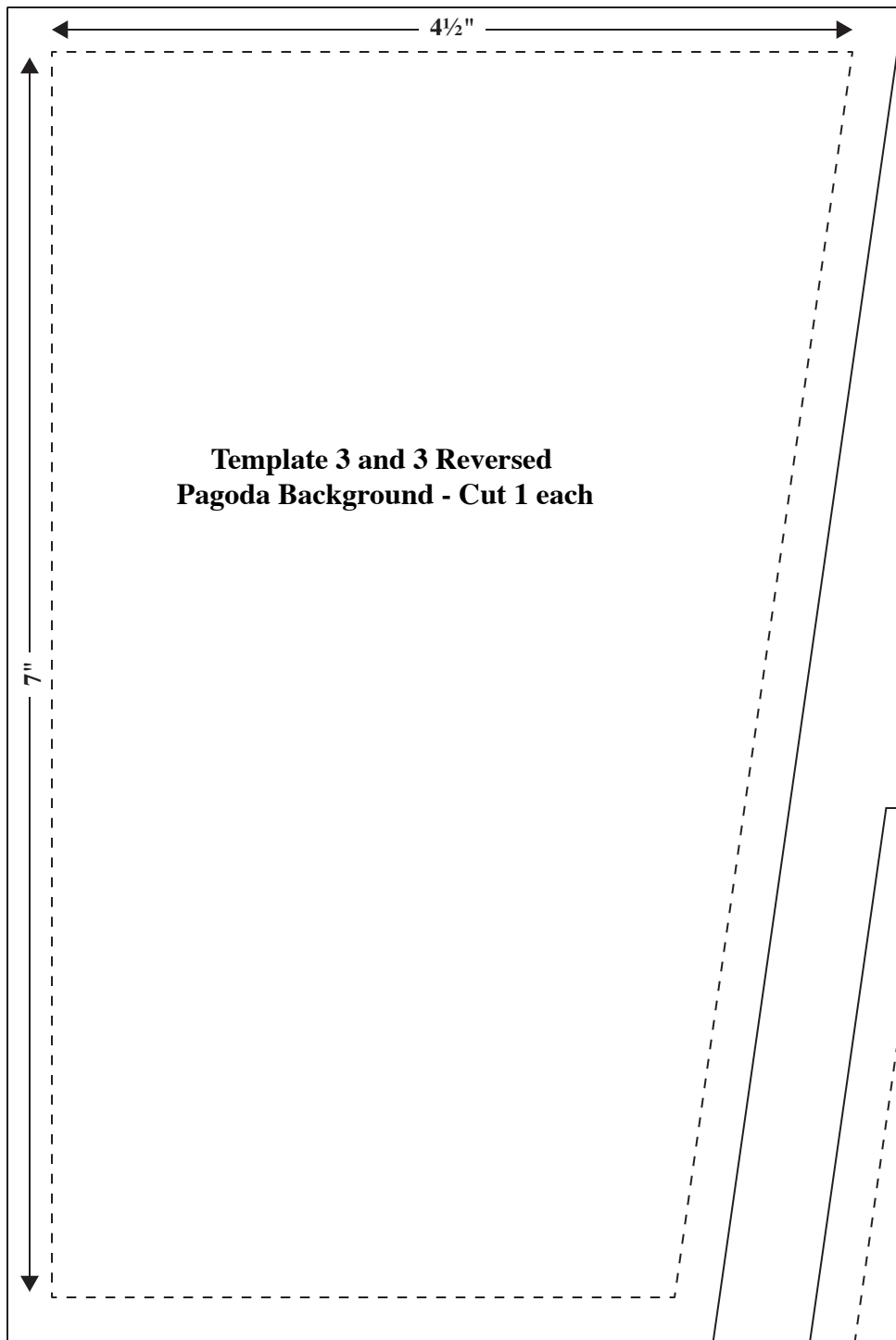


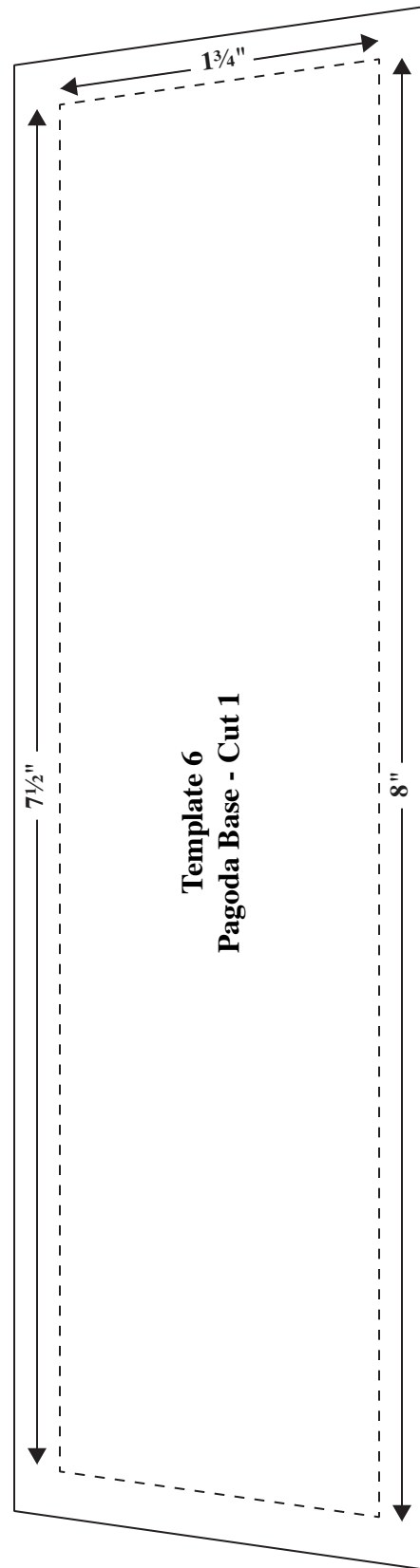
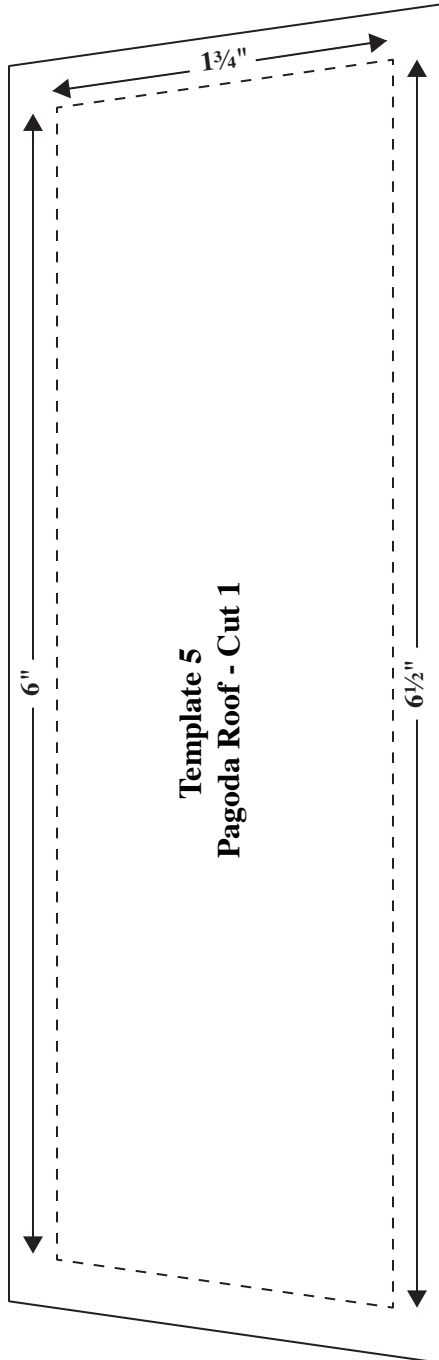
Quilt Assembly Diagram

Kyoto Garden Quilt



Kyoto Garden Quilt



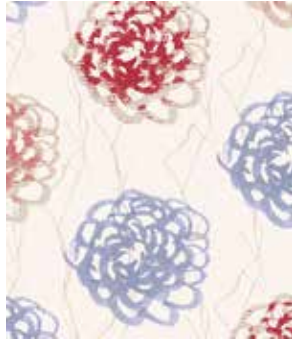


Kyoto Garden

FABRICS BY LORI MASON



6033-C*



6034-C*



6035-C*



6036-CR*



6037-C*



6037-CL*



6038-C*



6039-CN*



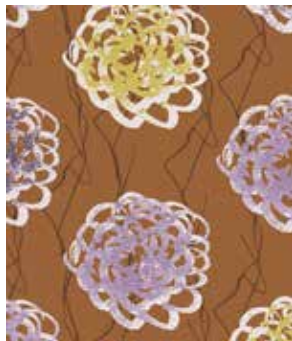
6040-C*



1867-C1*



6033-N*



6034-N*



6035-N*



6036-NP*



6037-N



6037-NL*



6038-NG*



6039-N*



6040-N*



5468-N1*

*Indicates fabrics used in quilt pattern. Fabrics shown are 25% of actual size.

andover



makower uk
The Henley Studio

Free Pattern Download Available

1384 Broadway New York, NY 10018
Tel. (800) 223-5678 • andoverfabrics.com